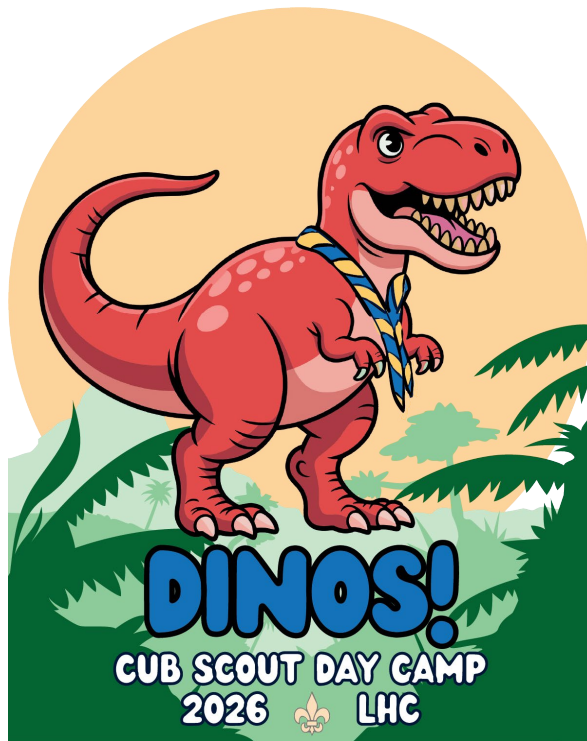


Lincoln Heritage Council
Scouting America

DINOS!

Unit Leader Planning Guide



“Making the Most of Your Experience”

June 18th-20th, 2026
Camp Rotary, Temple Hill, KY

Quote from Baden Powell, founder of Scouting, about camping:

“Camp is what the child looks forward to in Scouting.”

Directions to Rotary Scout Reservation

From Louisville:

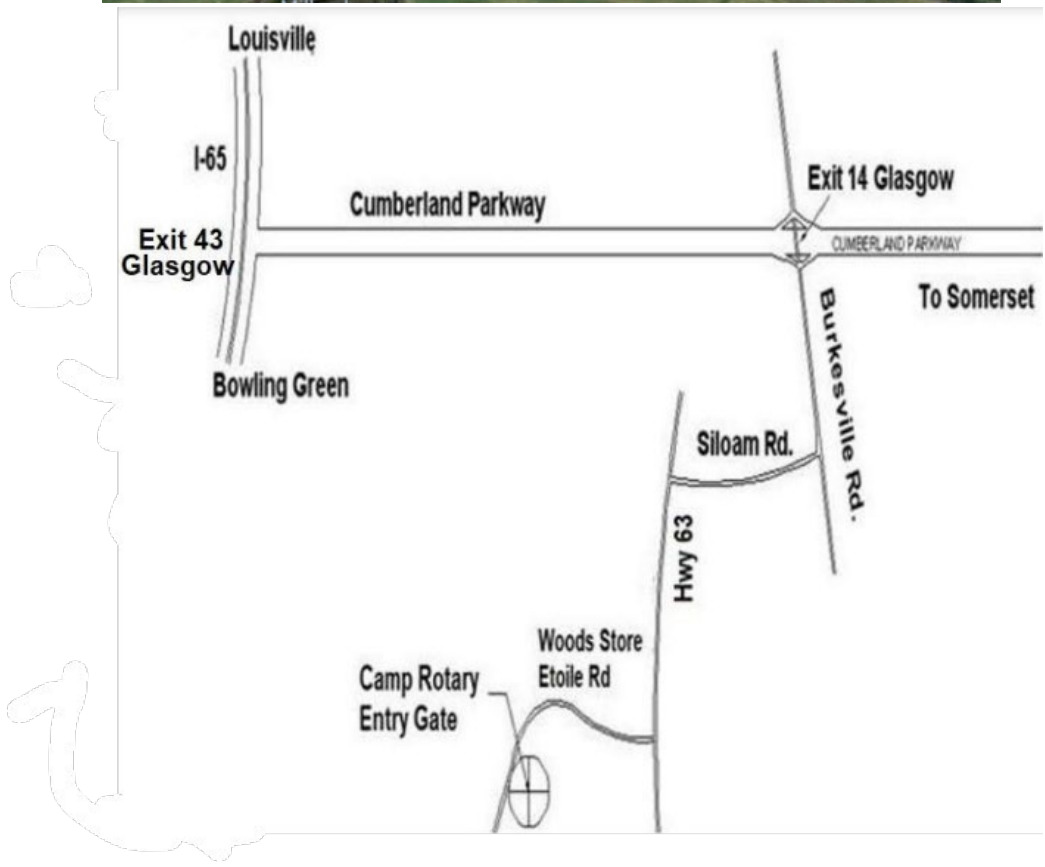
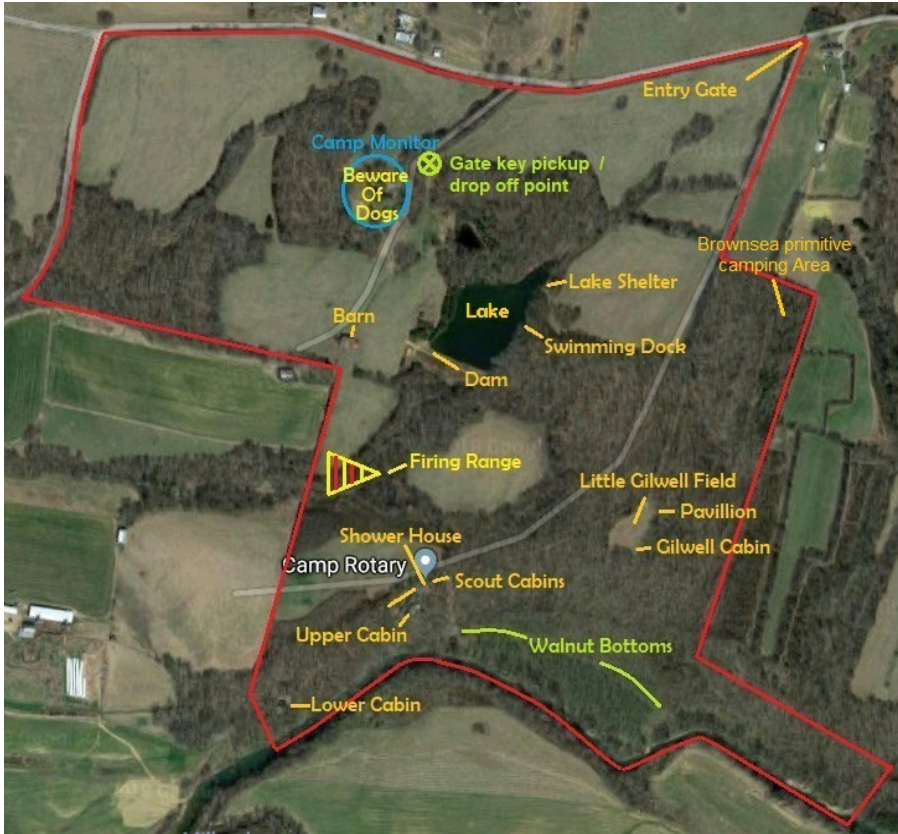
Go South on I-65. Exit onto Cumberland Parkway (I-65 Exit 43).
Take Cumberland Parkway to Exit 14 (Hwy 90-Burkesville Rd.)
Turn right at the stop sign at the end of the exit ramp onto Burkesville Rd.
Travel 1.5 miles and then turn right off Burkesville Rd. onto Siloam Rd.
At the end Siloam Rd., turn left onto Hwy 63.
Travel 4.1 miles on Hwy 63 and then turn Right onto Woods Store Etoile Rd.
Travel 0.5 miles and turn left into the camp entrance.

From Bowling Green:

Go North on I-65. Exit onto Cumberland Parkway (I-65 Exit 43).
Take Cumberland Parkway to Exit 14 (Hwy 90-Burkesville Rd.)
Turn right at the stop sign at the end of the exit ramp onto Burkesville Rd.
Travel 1.5 miles and then turn right off Burkesville Rd. onto Siloam Rd.
At the end Siloam Rd., take a left onto Hwy 63.
Travel 4.1 miles on Hwy 63 and then turn Right onto Woods Store Etoile Rd.
Travel 0.5 miles and turn left into the camp entrance.

From Somerset:

Go West on Cumberland Parkway to Exit 14 (Hwy 90-Burkesville Rd.)
Turn left at the stop sign at the end of the exit ramp onto Burkesville Rd.
Travel 1.5 miles and then turn right off Burkesville Rd. onto Siloam Rd.
At the end Siloam Rd., take a left onto Hwy 63.
Travel 4.1 miles on Hwy 63 and then turn Right onto Woods Store Etoile Rd.
Travel 0.5 miles and turn left into the camp entrance.



Unit Preparation for Camp

If your unit follows the steps listed below, the process of preparing everyone for an enjoyable experience at Day Camp should go smoothly.

Upon Receiving the Leaders Guide:

- Inform or remind all scouts and parents of the camp dates and location
- Recruit two or more adult leaders to attend camp with your unit.
- Note payment dates
- Consider unit providing adults to help run the event (please speak with the director or program director)

Finalizing plans for the outing:

- Give final notice to all scouts and parents about plans for attending camp
- Collect all Health Forms parts A & B from ALL scouts AND adults attending camp and bring them to camp for the medical officer
- Arrange for your unit's transportation to and from camp
- Ensure all your scout families have the camp information (start times, end times, what to bring, locations, important phone numbers, etc)
- Arrange payments through your unit or each family individually. (If a parent registers on their own, they may click to pay with camp cards and the unit will be charged through the unit account at council).
- Finalize registration online at www.lhcbbsa.org. Registration will be through Tentaroo. You may choose to have one person from your unit register everyone on Tentaroo or each person may be in charge of their own registration.

One week before Camp:

- Review schedules with your scouts and families.
- Double-check medical and health history.
- Prepare the unit equipment to bring to camp (canopies, coolers, meals, camp chairs, tent, etc.)
- Finalize transportation arrangements to and from camp.
- Review the Guide to Safe Scouting and Camp Regulations with leadership.

Scouting Policies and Procedures

Anyone participating in this event will be required to follow Scouting America National Guidelines as outlined in the Guide to Safe Scouting.

The Law is the Rule: Everyone is expected to abide by the Scout Law, Oath, and Slogan.

Buddy System: Everyone will use the Buddy System pairs for safety. Scouting's buddy system calls for Scouts to pair up with a friend or two for all activities. This helps ensure safety and accountability, and teaches Scouts to have responsibility for others. The buddy system is a key part of Scouting. Adults/Leaders should be notified before scouts leave a designated area.

Camp Security: All visitors to the camp must stop at the registration table or other communicated location and check-in. All visitors will receive a wristband to wear while on property. Upon conclusion of their visit, guests will sign out so camp administration will know who is on camp property at all times.

Alcoholic Beverages and Illegal Substances: will not be tolerated and are against BSA policy. Possession or use will result in immediate dismissal from camp.

Smoking and Tobacco: SA guidelines require a smoke-free, tobacco-free, vaping-free environment for our scouts. If you must smoke, vape, or use smokeless tobacco, please do so out of sight and smell of youth participants, youth staff, and not inside any buildings. Please "field dress" your butts and dispose of them properly remembering the ever-present danger of forest fires.

Vehicles: The Health and Safety Committee along with the Camping Committee has established a written policy and procedure of vehicles in camp.

- Participant vehicles are to remain in designated parking areas during the entirety of the camp. Vehicles will be permitted to load and unload, but must then be parked in the designated parking.
- When traveling to camp, one person per seatbelt and seat belts must be worn. No riding in truck beds. No ATV's, go karts, or golf carts are permitted. Only Staff carts are permitted.

Camp: Follow scouting guidelines for camping:

- Walk, do not run, within the camp lunch area.
- Remember tent stakes and tie-downs.
- Closed-toed shoes must be worn at all times.
- Leave No Trace.
- Trash your trash. It should be removed from all camp areas.

- No pets or bikes.

Knives, Hatchets, Axes, or Firearms: No firearms are permitted at Camp. No fixed blade, sheath or survival knives are permitted. Scouts will not have knives at camp.

First Aid: There will be a medical officer stationed on camp. All medical treatment or emergencies should be directed to the health officer. Minor first aid treatment can be given in session areas where limited first aid supplies are available.

Camp Emergencies: If there is an emergency, there will be 3 long blasts of the air horn and everyone should rally in a designated area. Once the emergency has passed, campers will be given instructions on where to go next. Campers should remain in the designated area until the “All Clear” signal of 5 long blasts has been given. Leaders should review these procedures with their campers

Electronics: Scouts **should not** bring tablets or electronic game machines to camp.

Trash: Your trash must be taken to a trash can provided. Any trash collected while family camping must be packed out by someone in your unit. There are no dumpsters at Camp Rotary and no trash is to be left on site.

Cleanup/Check-out: When your unit is ready to leave camp we ask that you please clean up your area and leave it the same or better than you found it. Campsites must be inspected. Prior to the inspection, units should pack all gear and clean their site. Unit area must be checked by camp staff prior to departure. Once the inspection is completed, the unit will be permitted to depart.

Youth Protection: Camp will adhere to all Youth Protection Guidelines. Leaders, parents, and staff are required to adhere to all Youth Protection Guidelines. For more information regarding Scouting’s Youth protection policy, go to: <https://www.scouting.org/health-and-safety/youth-protection/>

Medications: All Scouts bringing medication to camp must have the medications section of the Annual Health and Medical Form filled out by their parent/guardian prior to arrival at camp. When the scout checks in with the Health Officer, any specific storage requirements for medications will need to be disclosed. A locked refrigerator is available, if needed. All medication must be in its original container with the original label. There should be no handwritten changes to labels. All medication must be current, and expired medication will not be released to scouts. All medication must be stored and dispensed through the Health Officer or the Scout’s Unit Leader; the only exceptions are Epi-pens, inhalers, and other life-dependent emergency medicine. Use of non-prescription and/or over the counter medication should also be disclosed to the Health Officer. Camp is not the appropriate time to stop taking prescribed medications.

Unit leaders are encouraged to turn in health forms in advance to the Camp Director or Health Officer. By turning in the forms early, the Health Officer is able to better prepare for the coming week and identify any issues that may prevent scouts from participating in camp activities. It is much easier to obtain missing signatures or information the week before the scout arrives as opposed to trying to get signatures or authorization after arrival.

Camp Specific General Information

Deadline for Registration is Wednesday, June 4, 2025.

Registration: \$85 for Scouts and \$25 for Lil' Buddies. Anyone not registered 30 days prior will register with an additional fee of \$25 for scouts. Adults are free! Please note that all Tigers (scouts entering the 1st Grade in the fall) must be accompanied by a parent or guardian while at camp. There are numerous opportunities for adults who would like to attend camp with their scout!

Siblings can participate if they are of Scout age (6 years old or in 1st grade up to 17 years old). Siblings under the age of 6 will not be able to participate in some program activities.

All day camp registration takes place through Tentaroo. Scouts can be registered individually or as a pack. If you are unsure which option is best, please contact your Pack's leadership.

Registration fee includes a t-shirt, cup, patch, breakfast, lunch, crafts and all the fun possible!

Check-In: Upon arrival, have a designated representative from your unit, or parent check-in at the registration tent. Children participating in camp will receive a wristband upon arrival. This is how staff will be able to identify kids that are participating in camp.

Check-out: Parents will sign-out children with their Den Walker.

Uniforms: Scouts will receive a t-shirt on the first day of camp and will wear the shirt every day for camp. All scouts must wear close-toed shoes for the entirety of camp. No Crocs, flip-flops, or sandals of any kind are allowed. Swim shoes are required for canoe/kayak.

Leaders and Staff: Scouting America, unit t-shirts, or activity uniforms are acceptable for unit leaders attending. Staff will have a program t-shirt to wear. Closed-toed shoes are required. Any adult leader or parent planning to canoe/kayak must have swim shoes. Adult visitors who are not registered leaders are reminded that this is a family event and should dress modestly. Clothing portraying images of drugs, alcohol, tobacco, or other messages inconsistent with the Scout Oath and Law will not be permitted.

Open-Toed Shoes: Sandals, flip-flops, crocs, etc. are only permitted in the shower house. Closed toed shoes are required to and from the shower house.

Identification: Wristbands will be issued to all youth and adults upon arrival at camp. Wristbands must be worn at all times to properly identify to others that you belong in camp. In order to participate in adventure areas, a wristband is required – no exceptions. In the event a wristband is lost, a replacement is available. Your cooperation, as a leader in enforcing the wristbands and your adult's registration will help the staff make sure your Scouts are in a safe environment.

Refunds: A refund will be made to an individual or group that cancels program attendance/registration, less a 15% administrative charge as long as a written request is made at least 30 days prior to a council or district program/activity.

No refunds will be given to an individual or group that cancels program attendance/registration within 30 days of a scheduled council or district program/activity. Exceptions for medical situations or family emergencies can be made but must be submitted in writing within 7 days after the program/activity.

Fees are transferable to other Scouts but not refundable. All requests for refunds must be submitted in writing with a copy of the receipt or canceled check.

Camp Code: Scouts are asked to be courteous at all times. The Scout Oath and Law are to be your guidelines.

Time Schedule: Check in/drop off is at 8am. Camp starts at 8:30am and ends at 4:30pm.

Flag Ceremonies: One of a Scout's duties is their Duty to Country. We honor that duty each day by performing traditional flag ceremonies. Camp wide flag raising and lowering are held daily at 8:30 am and 3:45 pm. Units may sign up to serve as color guards for the colors ceremonies. Please see the Program Director for scheduling and instructions.

Lil' Buddies: Any child whose parent is assisting at camp (either as a den walker or camp staff) and is potty trained can participate in the Lil' Buddy program. Lil' Buddy program has a nominal cost of \$25. This covers snacks and activities for the week. You are required to pre-register your Lil' Buddy.

Canoeing/Kayaking: Tigers can only accompany ***adult swimmers*** as a passenger in a canoe. The adult swimmer must have completed a SA swim test, and submitted the form at camp. Wolves, Bears, Webelos, and AOLs, are permitted to kayak as long as they have passed a SA swim test, and been classified as a swimmer. Anyone not classified as a swimmer must be accompanied by a qualified swimmer in a canoe. Adult Volunteers who are not qualified swimmers can still volunteer in the aquatics area at the discretion of the aquatics director.

Swim Test Information: There will be **NO SWIM TESTS AT CAMP**. All swim tests must be completed prior to arriving at camp. Scouts, volunteers, and parents must bring the swim

classification form with them to camp. Scouts, volunteers, and parents who have been classified as swimmers and submitted the form at the beginning of camp will receive a designated armband that correlates with their swim classification.

After 4:30pm: Day Camp operates only between the hours of 8:30am-4:30pm. After 4:30pm, anyone still onsite is ***Family Camping***. Cub Scout Family Camping is an extension of the Cub Scout Day Camp Program. In addition to those programs offered at Day Camp, Scouts attending Family Camp will have the opportunity to spend additional time in the evening at various activities, as well as other additional night programs. Units/Unit leaders/Parents are responsible for their scouts' dinner and cracker barrel. Anyone choosing to stay on-site should plan to participate in the campfire program. Units are encouraged to plan songs, run-ons, skits, and/or jokes for the campfire program. Remember, all planned activities for the campfire program must be Scouting America approved and submitted to the Program Director prior to the campfire program.

Campfire Program: A camp-wide campfire will be held during camp on Friday night at 8:00pm. Line up for the campfires begin at 7:55pm beside the Gilwell Cabin. Campfires are only allowed in designated areas or in above ground fire pits. Abide by local, state and federal laws regarding fire and fire wood.



Camping: Camp Rotary offers families the opportunity to stay in a rustic campsite during their stay. There are 8 small cinder block cabins built in the 1940's with most having 2 bunk beds. It is recommended that each camper bring a mat/pad and sleeping bag if planning to stay in the cinder block cabins. Hammock camping is permitted. Any units wishing to bring their own tents are welcome to do so. Tent camping areas will be provided in the field across from the Upper Cabin. Campers have access to a common shower house containing 2 shower stalls, 2 toilet stalls, and 3 urinals. Electricity is not available in campsites. Units requiring electricity for operation of medical equipment should contact the Council Office in advance to make arrangements prior to arriving at camp. Please practice low impact camping principles.

Curfew and Quiet Time: Rest at camp will affect the person's ability to function in a cheerful and safe manner. Leaders are expected to set the example by respecting quiet times for the benefit of neighboring campers and themselves. Please keep conversations low and activities to a minimum between the hours of 10:00pm and 6:00am.

Contact with Wildlife: Camp Rotary is a natural habitat for many species of animal. Please keep in mind that these animals make their residence on a year-round basis. If you encounter wild animals while on a hike or in your campsite, do not disturb, injure, or attempt to chase it away. All campers are expected to respect wildlife and subscribe to the Outdoor Code while at camp. If you come in contact with an animal that is behaving strangely, (staggering, lying still-not trying to flee, seems sickly, foaming at the mouth, etc.) immediately report it to the Camp Staff. Do the same if

you are bitten or scratched by any wildlife. Never pick up or touch an animal that is injured or dead.

Daily Schedule

Units should **NOT** arrive before the scheduled arrival time. Upon arrival, units need to check in at the registration tent. The Awards Ceremony is at 3pm on Saturday. We would be delighted for your family to join the Awards Ceremony on Saturday to see and experience some of what your scout has throughout the week. All Ceremony visitors must check in anytime after 2pm. Please let your unit leader know ahead of time if you plan to attend. This will help your unit and camp staff plan accordingly. All schedules are subject to change before or during the event.

Thursday and Friday Schedule	Tiger	Wolf	Bear	Webelos	AOL	Saturday Schedule
8:00-8:30	Check-in	Check-in	Check-in	Check-in	Check-in	8:00-8:30
8:30-9:00	Opening Ceremony	Opening Ceremony	Opening Ceremony	Opening Ceremony	Opening Ceremony	8:30-8:45
9:00-10:00	Range	Arts and Crafts	Aquatics	Fishing	Nature and Skills	8:45-9:30
10:00-11:00	Nature and Skills	Range	Arts and Crafts	Aquatics	Fishing	9:30-10:15
11:00-12:30	Lunch	Lunch	Lunch	Lunch	Lunch	11:00-12:30
12:30-1:30	Fishing	Nature and Skills	Range	Arts and Crafts	Aquatics	10:15-11:00
1:30-2:30	Aquatics	Fishing	Nature and Skills	Range	Arts and Crafts	12:30-1:15
2:30-3:30	Arts and Crafts	Aquatics	Fishing	Nature and Skills	Range	1:15-2:00
3:30-3:45	Cleanup	Cleanup	Cleanup	Cleanup	Cleanup	2:00-3:00
3:45-4:30	Closing Ceremony	Closing Ceremony	Closing Ceremony	Closing Ceremony	Closing Ceremony	3:00-4:30

Meals and snacks are subject to change.

	Thursday	Friday	Saturday
Breakfast	TBD	TBD	TBD

Lunch	TBD	TBD	TBD
Snack	TBD	TBD	TBD
Dinner	TBD	TBD	NOT PROVIDED



Prepared. For Life.™

WHAT TO BRING

Swim classification record
 Closed-toed shoes
 Swim Shoes for canoeing/kayaking
 Camp t-shirt (provided at camp)
 Sunscreen and bug repellent (Apply yourself or before camp)
 Refillable water bottle
 Rain gear
 Hat or cap
 Personal flashlight
 Personal first aid kit
 A light backpack for packing personal gear during the day
 Dinner and cracker barrel supplies

Scouts are not to bring electronic games or game machines. Two way radios of any type are not to be used due to possible interference with Staff communications equipment. Firearms, fireworks, explosives, alcohol, and drugs will not be tolerated. All vehicles are subject to search.

Things to Remember

1. Two Deep Leadership (minimum) who are properly trained must accompany each unit.
2. Bring only the items needed for camp.

Questions? Contact the following:

Camp Director:

Chad Pageau
c.m.pageau@gmail.com
270-996-7803

Program Director:

Tyler Honeycutt
jaceh24@outlook.com
270-418-8313

District Executive:

Josh Hutcheson
josh.hutcheson@scouting.org
270-535-7588